

BIRTH+
08969 Asst.

PLAYSKOOL



CAUTION:

When toy is used in crib, the crib sides should be raised and the crib mattress should be in one of the lower positions.

Digital Music Player

Thank you for choosing
this **PLAYSKOOL** product!

Please keep this instructions
booklet for future reference, as
it contains important information
for using your **MADE FOR ME**
Digital Music Player.

 **x4** 1.5V AAA or LR03 size
BATTERIES INCLUDED

Replace with 4 x 1.5V "AAA" or LR03 size batteries.
Alkaline batteries recommended. Phillips/cross head
screwdriver (not included) needed to replace batteries.



Made
for **Me**

TM

TABLE OF CONTENTS

Getting Started

Introduction	1
Contents	2
Player Specifications.....	2
How to Play.....	3
Crib Connector Jammies.....	4
MP3 Unit Functions / Voice Recording	5

Using the MP3 Unit

System Requirements.....	8
Software Installation.....	8
MADE FOR ME™ Library.....	9
Loading Pictures	11
Creating Your Music Library.....	12
Loading Music.....	13
Transferring Music to the MP3 Unit.....	17

Helpful Information

Online Help	19
Battery Installation	20



▶ GETTING STARTED

TIP

For a quick and easy overview of the MADE FOR ME Library, be sure to watch the tutorial included on the Software Installation CD!

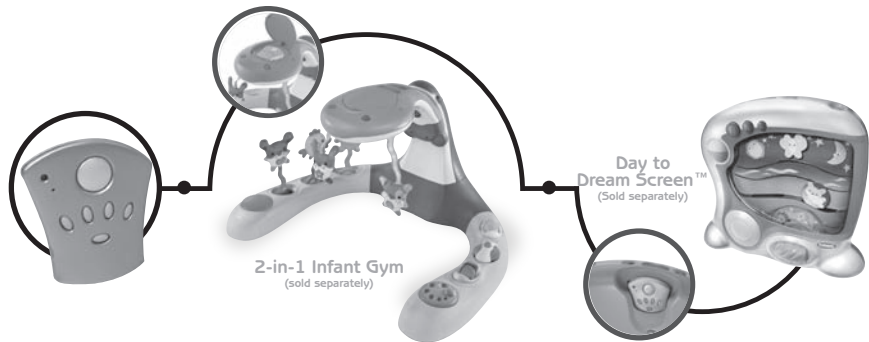
Introduction

No one knows your baby better than you do. MADE FOR ME toys are designed to help you meet your baby's unique needs!

The MP3 unit that comes with your Digital Music Player allows you to control what your baby hears—from soothing and energetic songs to stories and even your own voice!

The MP3 unit also works with all MADE FOR ME toys, so there's no end to the ways you can fine-"tune" playtime for your baby!

Look for these MADE FOR ME toys:



Contents

The USB cord is not a toy.
Intended for use by an adult.

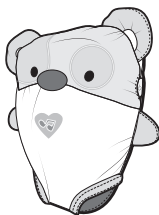
Digital Music
Player



MP3 unit



USB Cable



Crib Connector
Jammies



Software
Installation CD

Player Specifications



Without the MP3 Unit:

Your MADE FOR ME Digital Music Player comes with 6 preloaded songs and 3 sound effects that you can play when the MP3 unit is not in the Player.



With the MP3 Unit:

The customizable MP3 unit comes preloaded with 51 songs and sounds to delight your baby. The MP3 unit has 128 MB of storage space, which allows you to load up to 2 hours of your own music!

Storage Capacity:

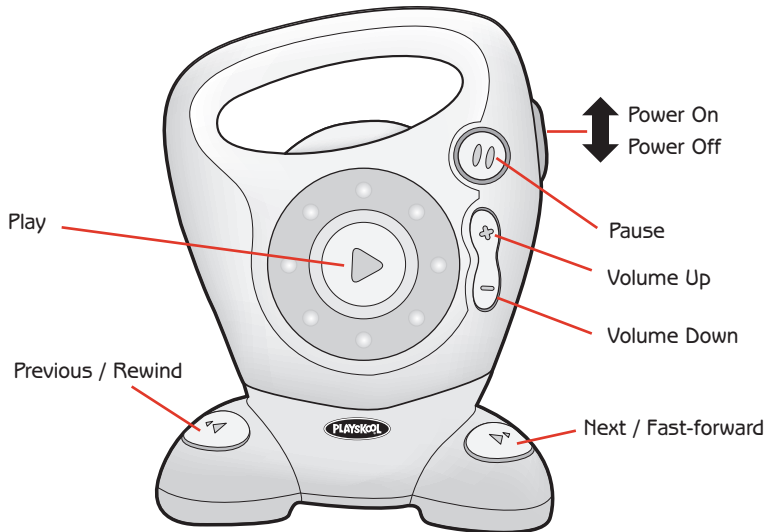
You can fit up to 2 hours of MP3 or WMA music on the MP3 unit. Estimated capacity is based on 4 minutes each per song or 128-Kbps encoding. Other bit rates will vary the number of songs that can be stored on the MP3 unit.

How to Play

Your MADE FOR ME Digital Music Player is designed to play right away—even without the MP3 unit! Simply turn the Player on and press Play to hear a song. Press Play at the end of each song to advance to the next. You can also advance and go back by pressing the buttons on the Player “feet.” You can cycle through 6 songs and 3 sound effects.

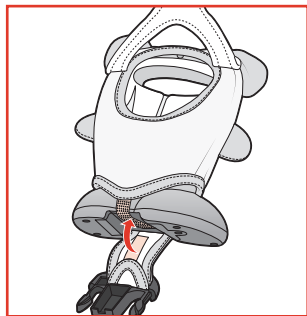
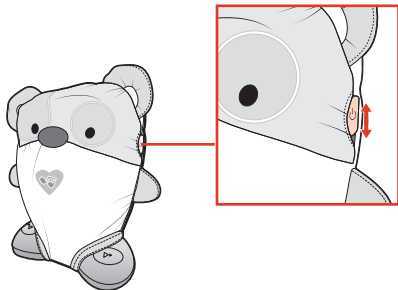
NOTE

Your MADE FOR ME Digital Music Player is shipped in Demo mode. You need to turn the Player off, and then on again to get out of Demo mode and get started.

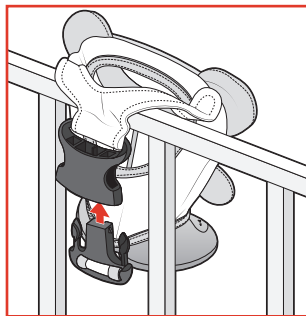


Crib Connector Jammies

- 1** To outfit your Digital Music Player with the crib connector jammies, open the clasp and slide over the unit. The hole in the side of the jammies should align with the Power button and the patch should align with the Play button.



- 2** Fasten the tab at the bottom of the jammies.

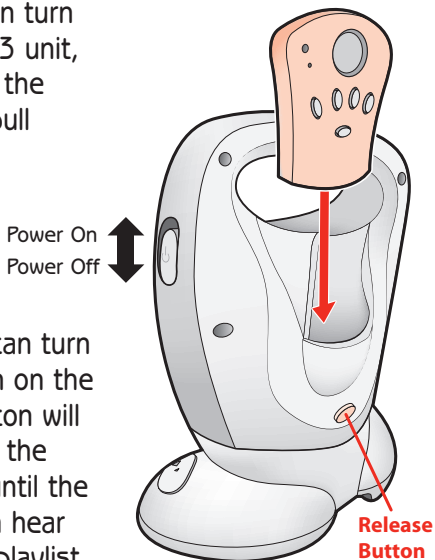


- 3** To attach to the crib, position as desired, loop the strap around the crib railing as shown, and close the clasp.

MP3 Unit Functions / Voice Recording

The MP3 unit fits into the back of your Digital Music Player and greatly enhances your Player's performance. Slide the MP3 unit into the back as shown, and then turn the Player on. To release the MP3 unit, press the button on the back of the Player, grasp the MP3 unit and pull it out.

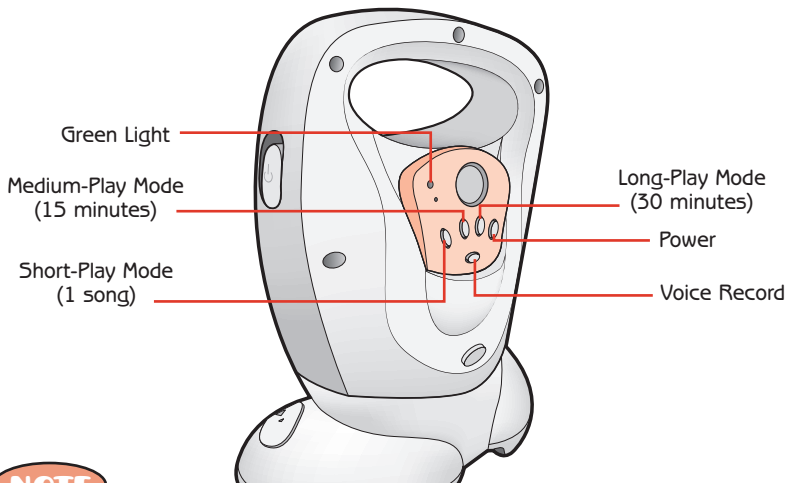
The MP3 unit is powered by batteries in the Player, so you never have to worry about charging it! Once the MP3 unit is positioned in the Player, you can turn it on by pressing the Play button on the front of the Player. The Play button will light up, and small lights around the button will turn off one by one until the unit is powered up. You will then hear a voice prompt announcing the playlist. (If nothing happens after you press the Play button, make sure the MP3 unit is securely in place, and the Player is turned on.)



The MP3 unit has three different play modes. Select your mode by pressing the button that corresponds to your desired play time (see diagram below).

NOTE

The MP3 unit will not work, record voice, or turn on unless it is positioned in the Player. If the Player is turned off, the MP3 unit automatically powers down.



NOTE

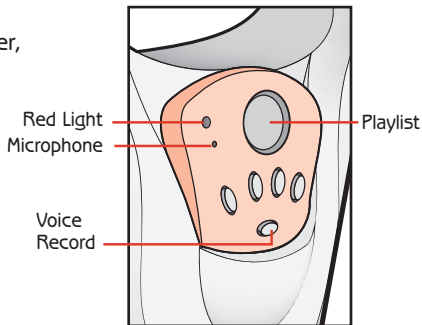
To preserve battery life, after two minutes of inactivity (following the end of your mode selection), the MP3 unit will automatically shut off. The MP3 unit will turn on again when the play button is pushed.

Selecting Playlists and Shuffling

To toggle between the Playtime, Soothing, Sounds, and Favorites playlists, or to Shuffle, simply press the large round button on the MP3 unit. A voice prompt helps you determine which playlist is about to be queued up in the MP3 unit.

The MP3 unit also has a voice recording function. Follow these easy steps to record your own voice!

1. With the MP3 unit positioned in the Player, press and hold the Record button.
2. Once the red light on the MP3 unit begins to blink, you can begin!
3. For best results, speak clearly into the microphone.
4. Continue to press the Record button until you are finished your recording.
5. Once you have finished, the MP3 unit will play back your recording.



NOTE

- While recording, if the red blinking light changes to a green blinking light, you have run out of memory.
- While recording if the red blinking light changes to a solid red light, you have run out of battery power.
- In both cases, the recording will stop then play back what you recorded.

Your voice file will automatically be stored in your Favorites playlist, and will be assigned a file name. When you go back into your MADE FOR ME Library, you will be able to rename the file if you wish.

▶ USING THE MP3 UNIT

System Requirements

- Microsoft® Windows® 2000/XP
- Intel® Pentium® II 350MHz, AMD® K6-2® 450MHz or better processor (Pentium III 450 MHz or higher recommended)
- 64MB RAM (128MB recommended)
- USB 1.1 port (USB 2.0 recommended)
- 30MB free hard drive space (more for audio content storage)
- CD-ROM drive with digital audio extraction support
- 1024 x 768 minimum screen resolution

NOTE

Not Mac OS Compatible.

Software Installation

1. Turn on your computer.
2. Insert the MADE FOR ME Software Installation CD. Your CD should start automatically. If it does not, follow the steps below:
 - Start Windows Explorer.
 - On the left pane, click the MY COMPUTER icon.
 - Right-click the CD-ROM/DVD-ROM drive icon, and then click AUTOPLAY.
3. Follow the instructions on screen.
4. If prompted, restart your computer.

NOTE

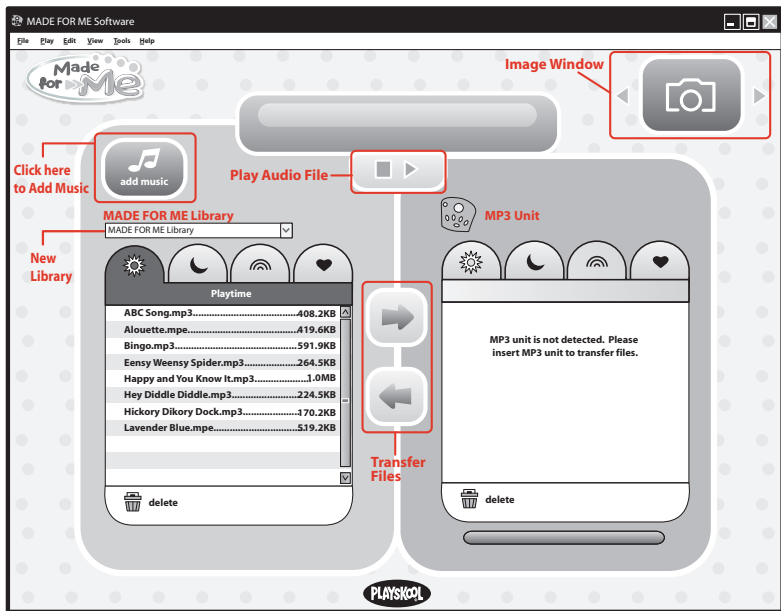
Do not connect the MP3 unit to your computer before setting up the software.

MADE FOR ME Music Library

For a quick and easy overview of the MADE FOR ME Library, be sure to watch the tutorial included on the Software Installation CD.

You can find the tutorial by following this path on your computer:

[Start](#) | [All Programs](#) | [Playskool](#) | [MADE FOR ME Software](#) | [MADE FOR ME Software Tutorial](#)



To get started, launch the MADE FOR ME software. This will take you to the MADE FOR ME Library, which is where you'll organize and store songs and audio files you'd like to transfer to the MP3 unit.

NOTE

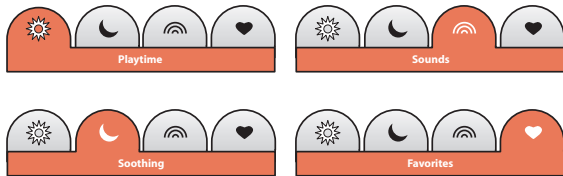
You must use the MADE FOR ME software to transfer audio files to your MP3 unit.

Other features of the MADE FOR ME Library include:

- A Play button to preview your audio files
- An Image Window, which lets you add your own pictures to the software

Playlists

The MADE FOR ME Library contains four playlists for organizing your audio files. These playlists are configured to work with the MP3 unit.



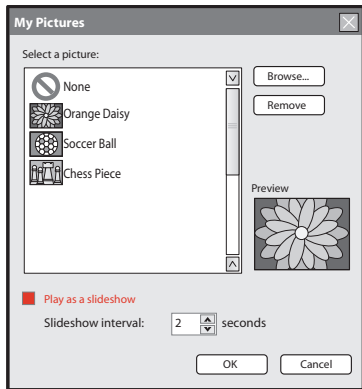
You can also easily create multiple libraries containing these four playlists:

1. Click on "File" | "New Library" in the task bar.
2. Name your new library and click "OK."
3. Your new library will appear in the library list drop-down menu.

To change the name of an existing library, click on "File" | "Save Library As..." To delete a library, click on "File" | "Delete Library."

Loading Pictures

To add pictures to your MADE FOR ME Image Window, simply click the “Image Window” button located in the upper right part of the screen. This will open a dialog box that allows you to browse your computer for images you’d like to add to the MADE FOR ME Image Window. This dialog box is also where you can delete photos you’d no longer like to include in your MADE FOR ME Library interface.



NOTE

Supported digital picture formats are: JPG, JPEG, GIF and BMP images.

Images run in a slideshow on your computer. (The slideshow can be turned off by deselecting the “Play as a Slideshow” check box.) The arrows in the Image Window box allow you to cycle through the photos you’ve loaded. If you load only one photo, that is the photo that will appear on the screen.

Creating Your Music Library

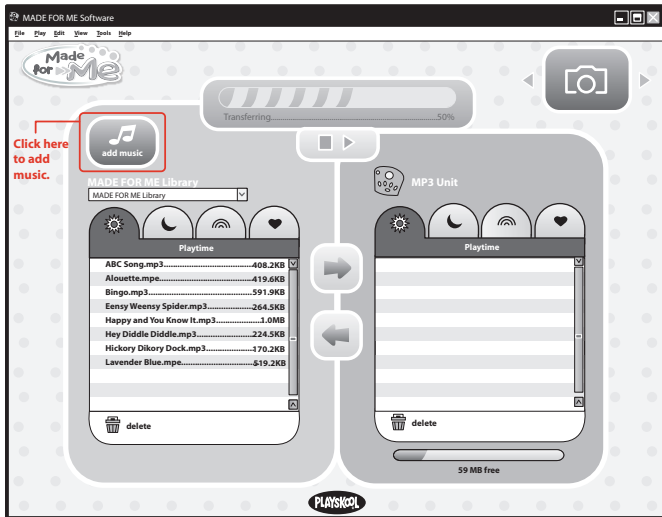


NOTE

Your MP3 unit will accept music downloaded from the Internet, or music ripped from your CD library (MP3, WMA, WAV files).

The MADE FOR ME Library is where you'll gather and organize the music you'll load onto the MP3 unit for use in your Digital Music Player.

1. Click on one of the four playlists.
2. Click on the "Add Music" button, which brings you to the Add Music Wizard.
3. Your music will be stored in the playlist you've selected.

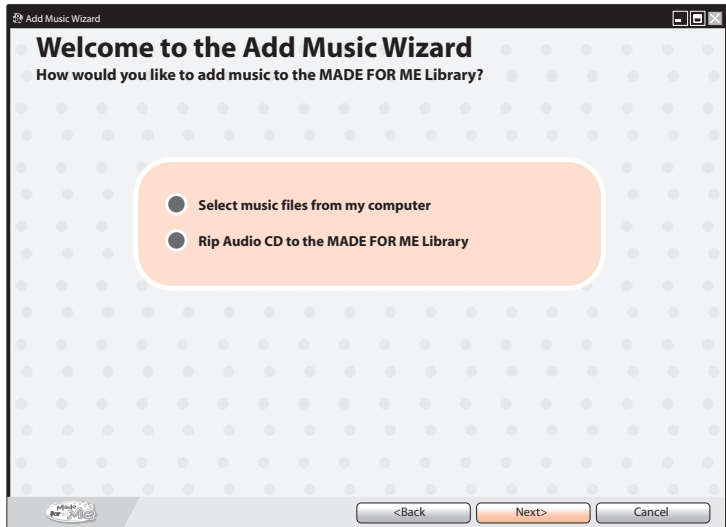


NOTE

Once you're back in the MADE FOR ME Library interface, you can move a song from one playlist to another by clicking on the song and dragging it to the desired playlist. You can also move a song by right-clicking on it and selecting "Move File To." You then have the option of selecting one of the four playlists.

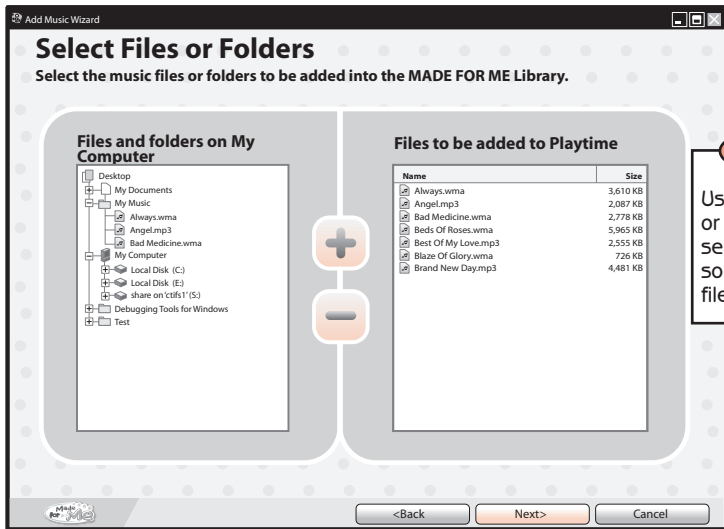
Loading Music

The "Add Music" screen gives you the choice of adding songs and audio files from your computer or ripping tracks from an audio CD. Once you have made your selection, click the "Next" button.



Selecting Music Files from My Computer

From the “Select Files or Folders” screen, you can browse your computer for files you’d like to add to the MADE FOR ME library.



TIP

Use the Control or Shift keys to select multiple songs or audio files at once.

Select a file or folder and click on the “+” button to add.

You can remove songs from your “Files to be added to Playtime” window by highlighting the song and clicking on the “-” button. When you are finished selecting songs, click the “Next” button.

Rip Audio CD

If you selected “Rip Audio CD to Made for Me Library,” and a CD is in your disk drive, you will be automatically directed to the “Select CD Tracks” screen and the CD tracks will show up in both your “CD Tracks” window and in your “Tracks to be added to Playtime” window.

If you don’t want to rip all of the tracks from your CD to your playlist, use the “-” button to remove unwanted tracks from the “Tracks to be added to Playtime.” When you are finished, click the “Next” button.

Select CD Tracks
Select the CD Tracks or folders to be added into the MADE FOR ME Library.

CD Tracks	
Name	Size
T.J.'s Theme Song	3,610 KB
The Safari Song	2,087 KB
Bibba & Jibba Jam	2,778 KB
Dust Bunny Blast	5,965 KB
Coldybear and the Three Penguins	2,555 KB
The Pirate Song	726 KB
I'm Not Afraid	1,410 KB
Be a Hero	2,022 KB
The Teeny Tiny Song	1,678 KB
Three Little Cookies	3,265 KB
The Magic of Sharing	4,575 KB
Special Time Together	1,826 KB

Tracks to be added to Playtime	
Name	Size
T.J.'s Theme Song	3,610 KB
The Safari Song	2,087 KB
Bibba & Jibba Jam	2,778 KB
Dust Bunny Blast	5,965 KB
Coldybear and the Three Penguins	2,555 KB
The Pirate Song	726 KB
I'm Not Afraid	1,410 KB
Be a Hero	2,022 KB
The Teeny Tiny Song	1,678 KB
Three Little Cookies	3,265 KB
The Magic of Sharing	4,575 KB
Special Time Together	1,826 KB

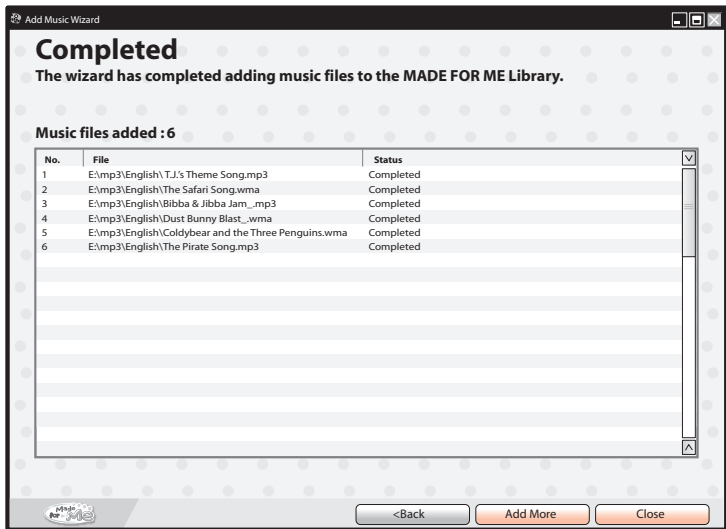
<Back Next> Cancel

NOTE

If a CD is NOT in your disk drive, you will be prompted to insert a CD before moving to the “Select CD Tracks” screen.

Final Steps

The “Completed” screen lists the songs and audio files you have added to your MADE FOR ME Library. From here, you can add additional songs by selecting the “Add More” button, or exit by selecting “Close.”

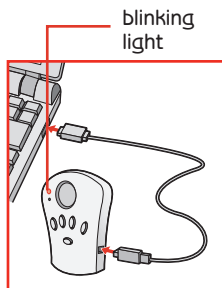


The songs you have added now appear in the MADE FOR ME Library. The number of songs and audio files you store in your MADE FOR ME Library varies according to your computer’s memory capacity.

Transferring Music to the MP3 Unit

Connect the MP3 unit to your computer's USB port with the USB cable (included).

Once the unit is connected to your computer, you should see a green blinking light on the MP3 unit and the right side of your screen becomes active.



From your MADE FOR ME Library (left side), click the playlist tab from which you want to transfer songs and select songs to transfer. Then, click the playlist tab on the MP3 unit (right side) where you want to transfer songs.

TIP

Use the Control or Shift keys to select multiple songs or audio files at once.

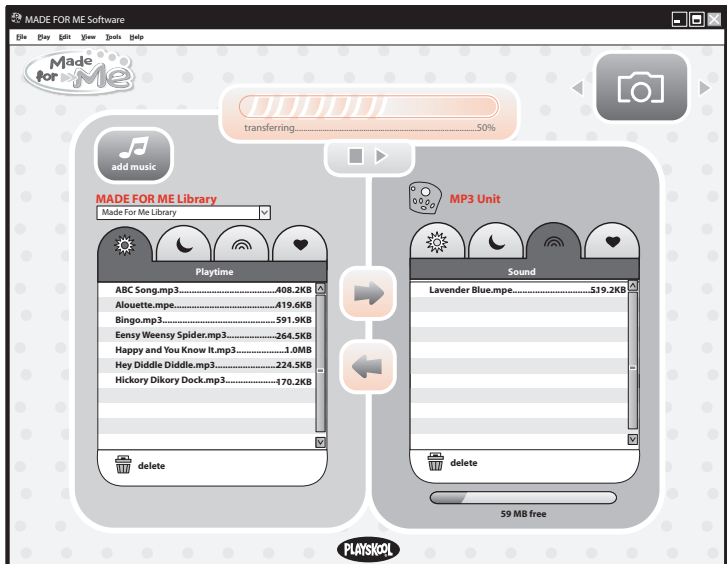
NOTE

You can transfer songs into the same playlist on the Player or a different playlist.

Once you have selected a song to transfer, use the right-pointing arrow button to transfer the song to the Player. When you click on the arrow, the transfer bar at the top will show the status of the transfer, and you should see a red blinking light on the MP3 unit.

NOTE

Do not disconnect the MP3 unit from your computer while the red light is blinking, as it will result in a failed transfer.



You can use the left-pointing arrow to transfer a song from the Player to your computer, which is useful if you have made a recording with the built-in microphone in the MP3 unit. (See “MP3 unit Functions” for more information about voice recording.)

The amount of memory remaining on the MP3 unit is shown in the memory indicator below the MADE FOR ME Player window.

Disconnecting Your MP3 Unit

To close out of your MADE FOR ME software, click the “Close Window” icon (X) in the upper left side of the window.

You can disconnect your MP3 unit by clicking the “Eject Disk” icon from the task bar. Select “USB Mass Storage Device” (the MP3 unit) and click “Stop.” A dialog box will prompt you to remove your device. Unplug the USB cord from your computer. When the light on the MP3 unit goes from blinking green to solid yellow, you can unplug your MP3 unit. When unplugged, the MP3 unit will shut off automatically.

TIP

Remember, even if you don't load your own music onto the MP3 unit, by sliding the unit into your Player, you get 51 songs and sound effects, categorized into the four playlists.

HELPFUL INFORMATION

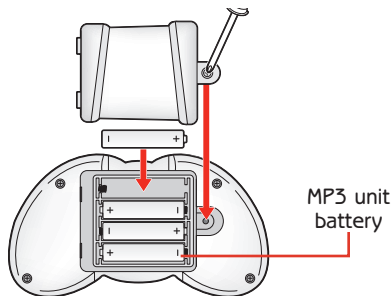
Online Help

For 24-hour online help resources, go to www.playskool.com/madeforme. Also check the MADE FOR ME Web site periodically for updates to your MADE FOR ME software.

Battery Installation

Your MADE FOR ME Digital Music Player comes with batteries.

Replace with 4 x 1.5V "AAA" or R03 size batteries. Alkaline batteries recommended. Phillips/cross head screwdriver (not included) needed to replace batteries.



NOTE

3 batteries power the Digital Music Player and 1 battery powers the MP3 unit (see diagram). Therefore, if the MP3 unit is not working, it may not be necessary to change all 4 batteries. Changing the 1 battery that powers the MP3 unit should suffice.



CAUTION:

- 1. As with all small batteries, the batteries used with this toy should be kept away from small children who still put things in their mouths. If they are swallowed, promptly see a doctor and have the doctor phone (202) 625-3333 collect. In other countries, have the doctor call your local poison control center.**
- 2. Make sure the batteries are inserted correctly and always follow the toy and battery manufacturer's instructions.**
- 3. Do not mix old and new batteries, alkaline, standard (carbon-zinc) or rechargeable (nickel-cadmium) batteries.**

IMPORTANT: BATTERY INFORMATION

Please retain this information for future reference.

Batteries should be replaced by an adult.



CAUTION:

- 1. Always follow the instructions carefully. Use only batteries specified and be sure to insert item correctly by matching the + and – polarity markings.**
- 2. Do not mix old batteries and new batteries or standard (carbon-zinc) with alkaline batteries.**
- 3. Remove exhausted or dead batteries from the product.**
- 4. Remove batteries if product is not to be played with for a long time.**
- 5. Do not short-circuit the supply terminals.**
- 6. Should this product cause, or be affected by, local electrical interference, move it away from other electrical equipment. Reset (switching off and back on again or removing and re-inserting batteries) if necessary.**
- 7. RECHARGEABLE BATTERIES: Do not mix these with any other types of batteries. Always remove from the product before recharging. Recharge batteries under adult supervision. DO NOT RECHARGE OTHER TYPES OF BATTERIES.**
- 8. As with all small items, these batteries should be kept away from children. If swallowed, seek medical attention immediately.**

FCC STATEMENT

This device complies with part 15 of the FCC Rules. Operation is subject to the following two conditions: (1) This device may not cause harmful interference, and (2) this device must accept any interference received, including interference that may cause undesired operation. This equipment has been tested and found to comply with the limits for a Class B digital device, pursuant to Part 15 of the FCC Rules. These limits are designed to provide reasonable protection against harmful interference in a residential installation. This equipment generates, uses and can radiate radio frequency energy, and, if not installed and used in accordance with the instructions, may cause harmful interference to radio communications. However, there is no guarantee that interference will not occur in a particular installation. If this equipment does cause harmful interference to radio or television reception, which can be determined by turning the equipment off and on, the user is encouraged to try to correct the interference by one or more of the following measures:

- Reorient or relocate the receiving antenna.
- Increase the separation between the equipment and the receiver.
- Consult the dealer or an experienced radio/TV technician for help.

CREATIVE®

POWERED BY
CREATIVE

Creative and the Creative logo are trademarks or registered trademarks of Creative Technology Ltd in the U.S. and other countries.

Warning: Changes or modifications not expressly approved by the party responsible for compliance could void the user's authority to operate the equipment.

Shielded cables must be used with this unit to ensure compliance with the Class B FCC limits.

If you have any questions, please contact:
Consumer Affairs, Hasbro, Inc.
1027 Newport Avenue
Pawtucket, RI
Tel: 1-800-752-9755



© 2006 Hasbro.
All Rights Reserved.
TM & ® denote U.S. Trademarks.
08969 Asst. P/N 6688720000

Visit
PLAYSKOOL
.com

Questions? Call 1-800-PLAYSKL